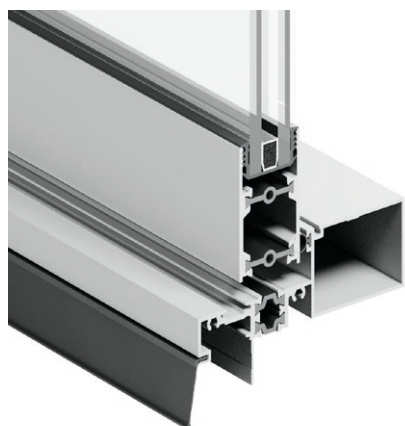


THERMARES AWNING WINDOWS



The ThermaRes awning window is a brilliantly functional design, hinged at the top to open outward from the bottom, allowing for ventilation in any weather. The slim profile frame ensures energy performance while maximising natural light and views.

- Straight-cut sashes and a square slimline frame create a minimalist style.
- Double-glazing prevents heat transfer between inside and outside, reduces energy bills and offers year-round comfort.
- Flexible internal finishing options for all styles and tastes.
- Compatible with different construction methods and materials.
- Awning functionality allows for ventilation in all weather.
- Thermally broken aluminium construction for durability, flexibility and energy performance.
- All windows keyed alike. Use one key for multiple windows.
- Available in a variety of configurations and coupling options for innovative designs.
- Chain winder features an integrated lock-and-handle in one. The stainless-steel chain offers durability and reliability.
- On larger windows, modern low-profile sash fasteners ensure a tight seal.
- Restricted opening option to prevent falls.
- Performance window seals offer improved noise insulation and prevent dust, water and wind penetration.
- A range of glazing options to improve comfort, serenity, security and privacy.



Thermally broken and energy efficient

The thermally broken frames prevent heat transfer, improve energy efficiency, and offer low maintenance and durability.

Specifications

Product	Awning Windows
Product series	ThermaRes
Frame profile	57mm x 35mm
Sill options	N/A
Max frame	2700mm high
Max sash	Available options: 2289mm high x 864mm wide 660mm high x 1775mm wide 1499mm high x 1134mm wide
Sash profile	Stiles – 41mm, bottom rail – 52mm, top rail – 52mm
Glazing	20mm Double glazing only
BAL rating	Deemed to satisfy BAL29
Seal type	PVC bulb seal
Colour options	Ultra Black, Pearl White, Surfmist and Monument
Screen options	Flyscreen and barrier screens
Hardware options	<ul style="list-style-type: none"> Chain winder – Black, White, Monument and Silver Sash fastener – Black, White, Monument
Installation options	By builder
Warranty	10-year warranty

For full range of configurations and standard sizes refer to the standard size and range charts.

Performance

Acoustic performance	
Performance criteria	Glass type
RW32	Double glazing – 4/12Ar/4
RW34	Double glazing – 6/8Ar/6
RW36	Double glazing – 4/10Ar/6.38 Lam
RW36	Double glazing – 6/6Ar/10.38 Lam
RW38	Double glazing – 4/10Ar/6.5 Vlam Hush
Wind and water performance	
Performance criteria	Rating
SLS	1200Pa
ULS	3000Pa
Water	450Pa
N rating	N4 Corner/N5
Thermal performance	
Performance criteria	Rating
Double glazed Uw range	2.0 – 3.0
Double glazed SHGC range	0.18 – 0.55



Slimline minimalistic frame

Maximise natural light and achieve a uniform look across all windows and doors with straight-cut sashes.

THERMARES AWNING WINDOWS

Hardware



Chain winder



Sash fastener

Screens



Aluminium screen fixed internally



Aluminium screen fixed internally, with sash fasteners